

1. summarize

specification

Working temperature: 0-85°

Working humidity: 5% - 90% RH noncondensing

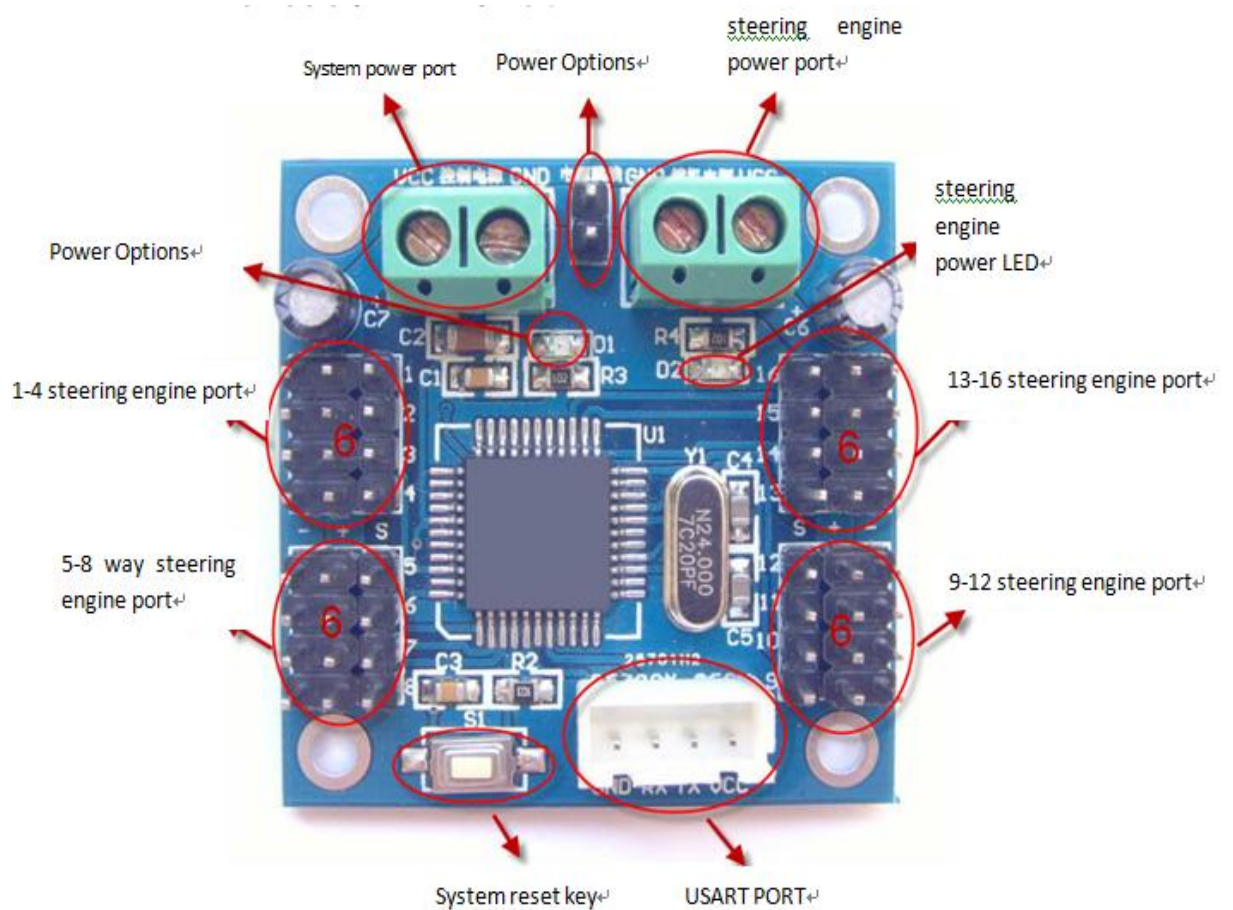
Rated power: DC4.5 V to 6.0 V

Timing accuracy: 0.5 us

Control precision: 0.05 °

Specify precision: 0.01°

2. Description and Introduction of hardware



Working mode

- (1). The serial port control: a serial port to send commands to control the movement of the steering gear.
- (2). Memory card control: put debugging commands into memory card to control the movement of the steering gear.

In the offline.

- (3). Wireless control: transmitted by wireless serial command to debug and control the servo.

3. operation of software

steering engine controller can receive serial command.

- (1) The instruction format

The format of command: # < ch > P < time > !

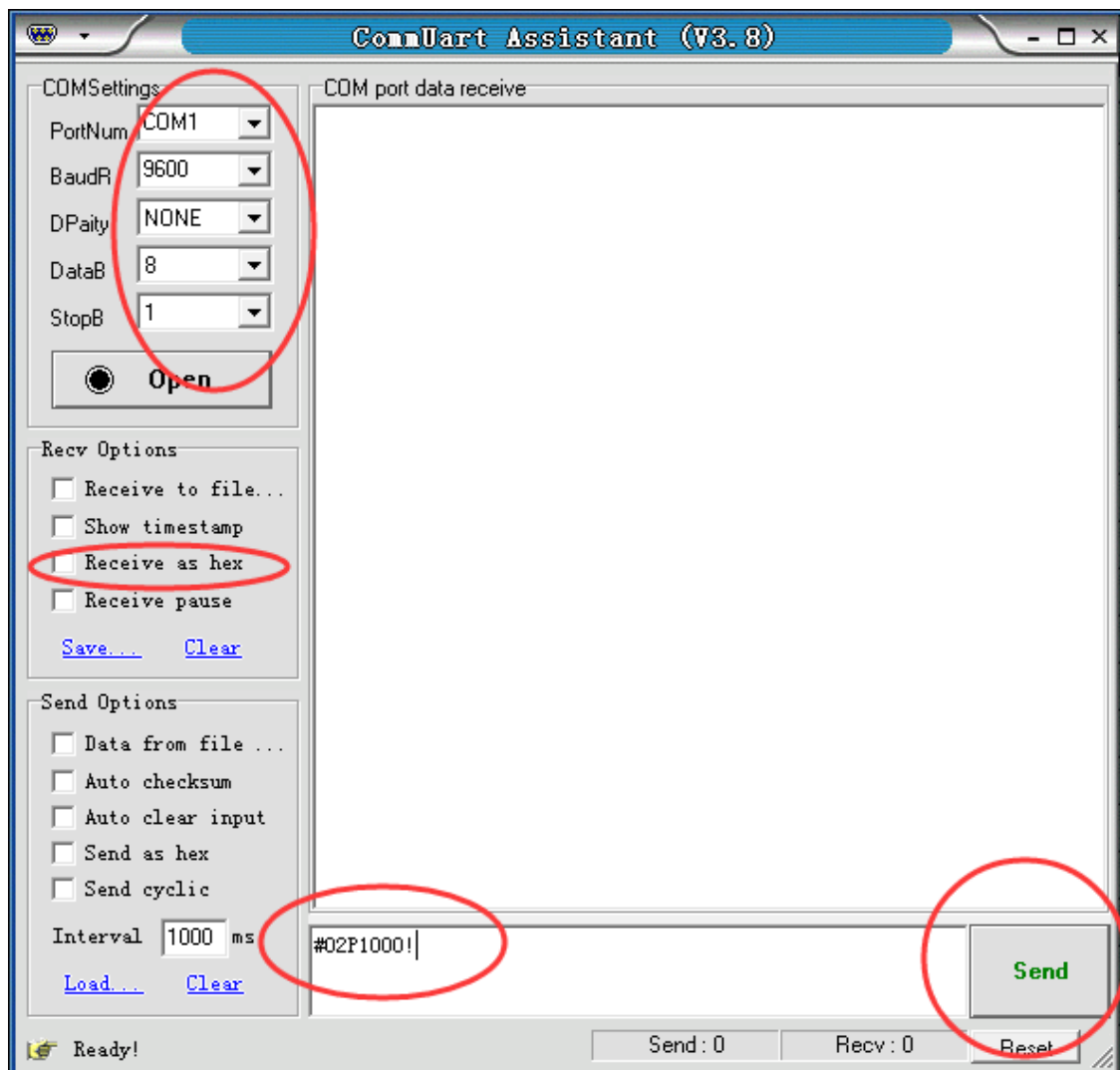
<1>. < ch > said steering gear control is which road,totally 16 way (00-15) not 1-16.

<2>. The P instruction format fixed symbol.

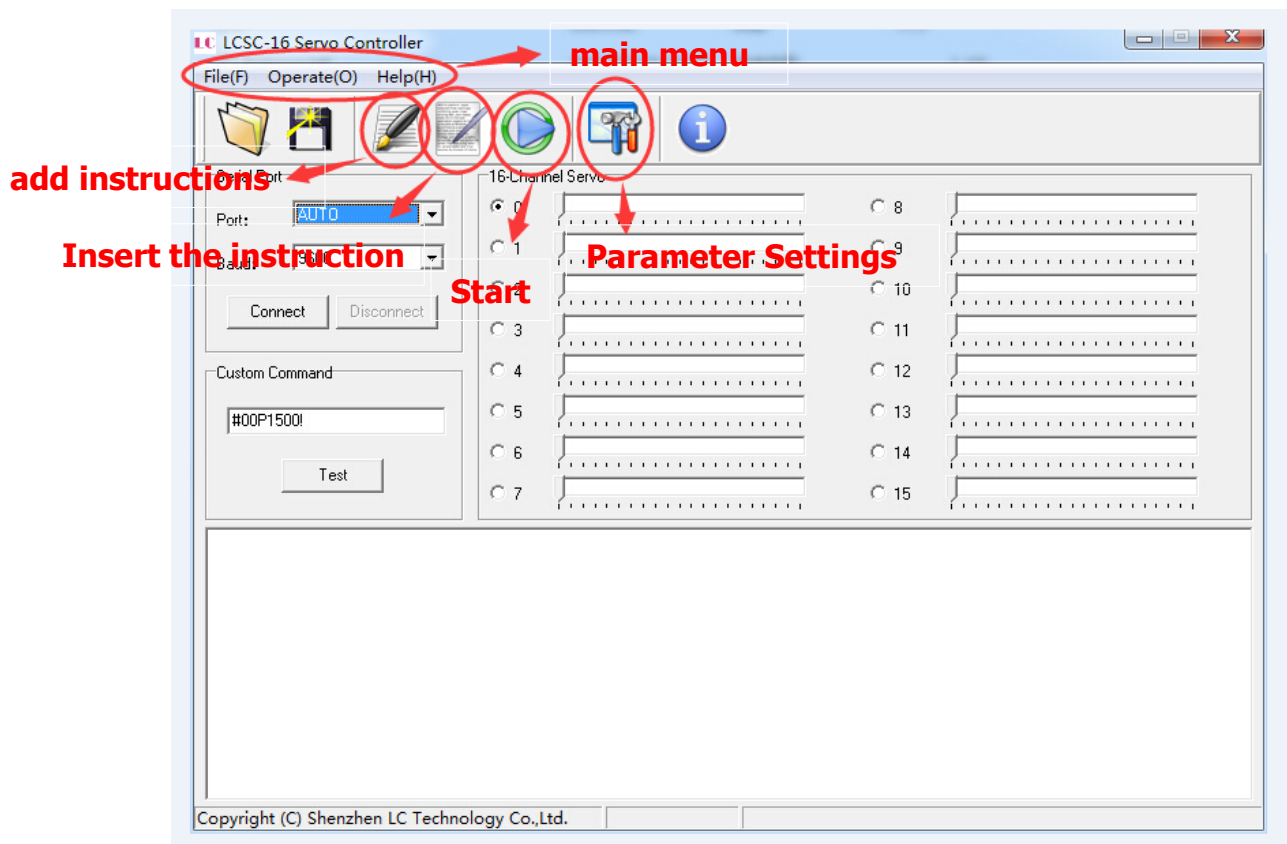
<3>. < time > said the width of the PWM signal.

<4>.!The end of the instruction symbols.

- (2)Use serial debugging assistant



(3). use LCSC upper computer software



Confirm the hardware connection, first of all to carry on the serial port Settings. Automatic identification of the software with a serial port side

No need to adjust the port and Baud rate , connect the line directly, after the connection can be controlled the steering gear.

This software is easy to use, there are two ways to control the servo motor.

<1>. Go in regulating drag the scroll area to set the point of view, every road servo controller has a scroll bar control, the left is 0°

On the right is 180°. Scroll to the appropriate location, the steering gear will also follow to the corresponding point of view. The software support for dynamic drag.

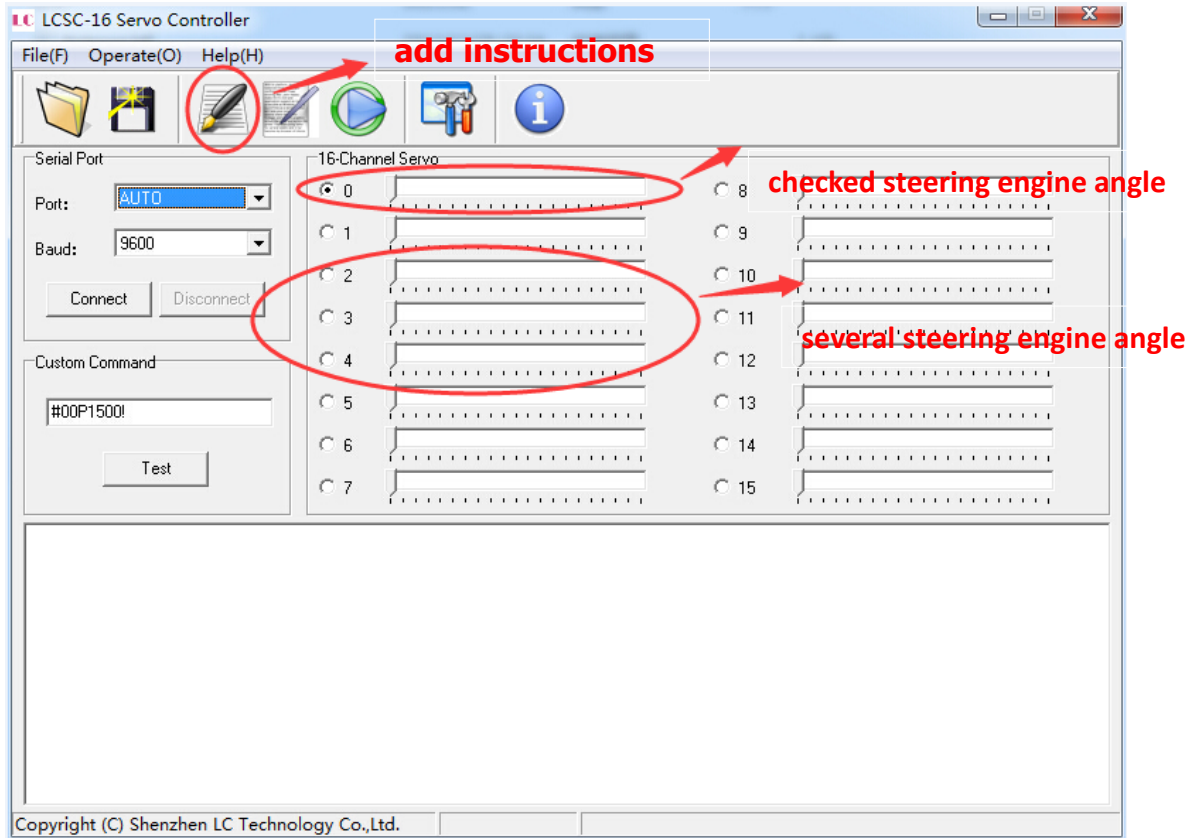
<2>. Through the text edit box, edit command, each instruction takes up one line. This method is suitable for the occasion know steering gear to turn in advance how many angle and in the same action in many place (you can copy and paste. Greatly reduced the time debugging).

A. The main menu: internal contains all the shortcut menu.

B. Open: when has turned out to save the file can be used to open the file to open the original file.

C. Save: when the completion of some or all of the instructions, can save the file in time, in order to use later.

D. Add instructions: in the regulation of points to control the Angle, steering drag the scroll bar to the need click add instructions, the software automatically generate an instruction in the text edit box. If can add many instructions needed to complete the action group.

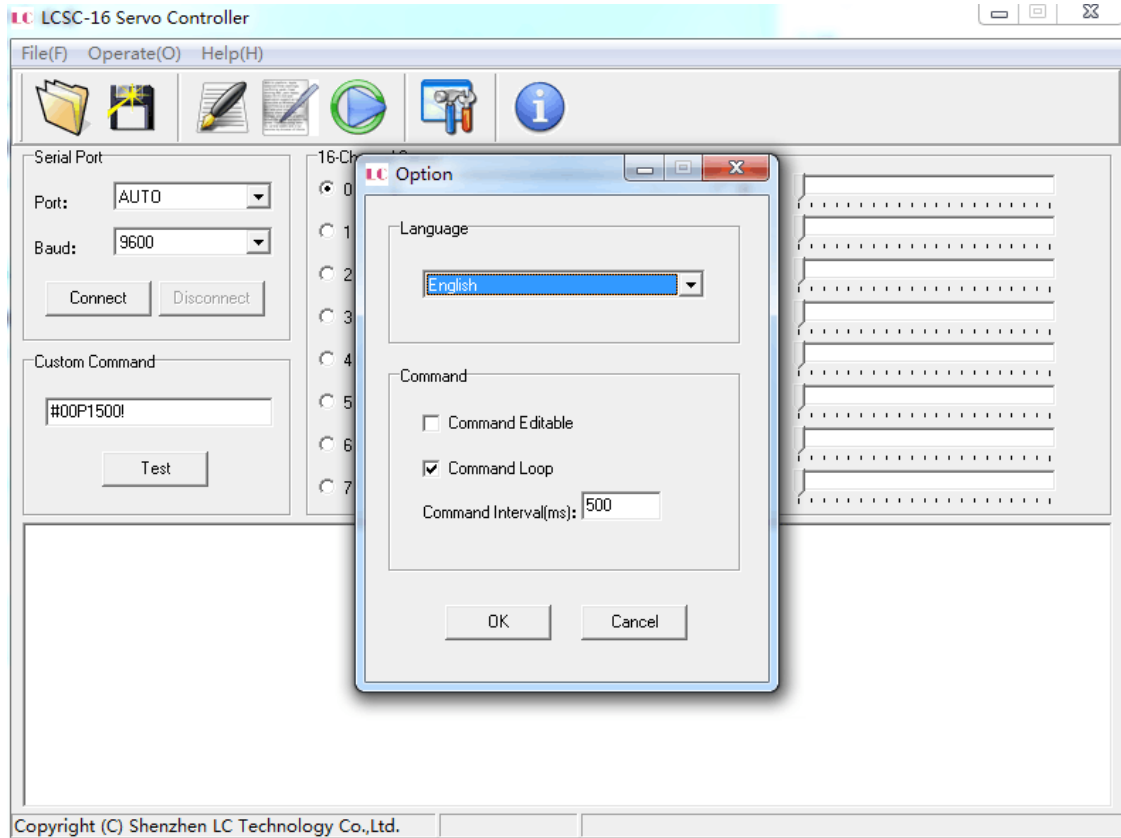


E. Insert the instruction: when you edit multiple instructions, need to insert a new means in the middle of the original instructions, can be in the text edit box, the cursor point in the front to insert position command, click plug the instruction.

F. Start: when editing after good instruction in text editing area click this button and executes instructions.

G. Parameter Settings:

Language Settings: support for multiple languages, can choose to simplified Chinese, traditional Chinese and English.



Instruction set: check enabled on instruction after editing can edit command in a text editing area, Text edit box won't be able to edit instructions. Check the instructions loop execution within a text box in turn loop execution until manually stop, otherwise all instructions only executed in sequence in the text box, in turn, will stop.

Instruction time interval: can choose two instruction execution time interval between each other