

Tools you need:

- ①Iron (30W)
- ②Solder wire
- ③Multimeter
- ④Tweezers
- ⑤Wire cutters

Precautions:

- ①Check part values & quantities against part list
- ②Always meter resistor values before soldering
- ③Understand all part polarities and orientations

ASD-84S

Audio spectrum LEDkit instructions

Rev. 1. 0

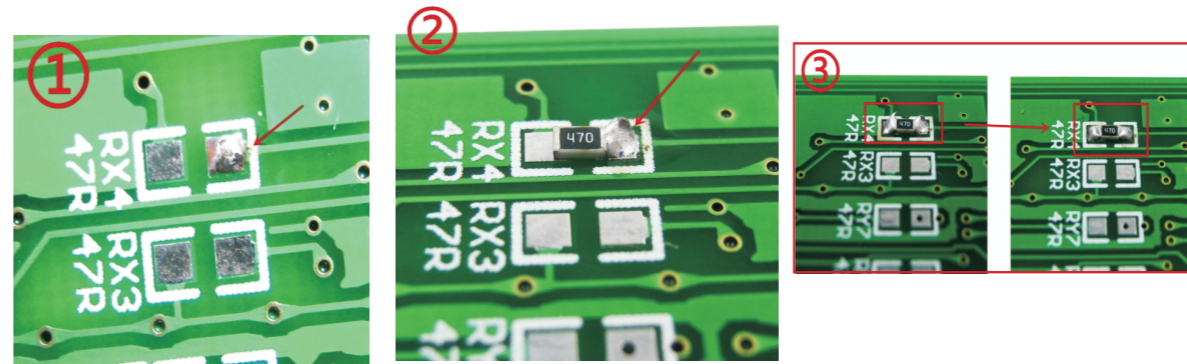
August 4, 2017

Produced by YiQi

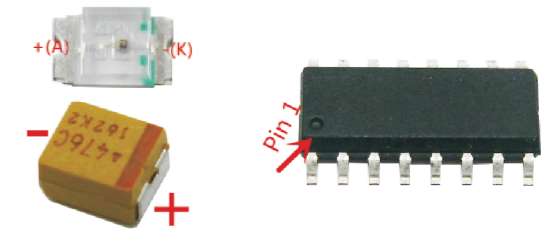
1. Method for installing SMD resistor

- ①Solder tin at one end of the pad. As shown in Figure 1
- ②Clamp the resistor on the pad with a clamp
- ③Heat the pad with a soldering iron and fix one end of the resistor on the pad As shown in Figure 2
- ④The other end of the welding resistor.Finally, solder joint repair until perfect As shown in Figure 1

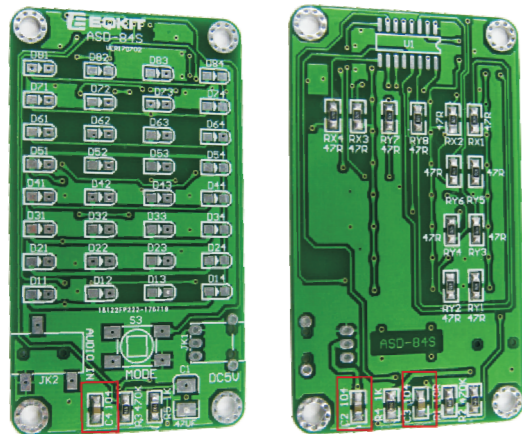
Refer to the list at the bottom right to fit the resistor onto the circuit board



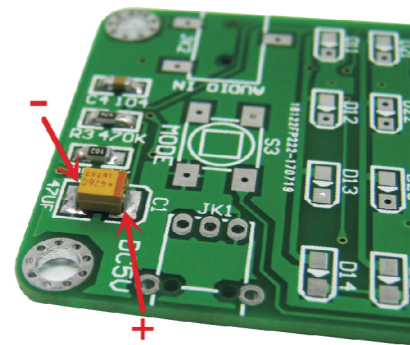
Note the difference between the LED, the polarity capacitor, and the pin of the integrated circuit



2. Install Cap: Install the 104PF capacitor to the C2.C3.C4

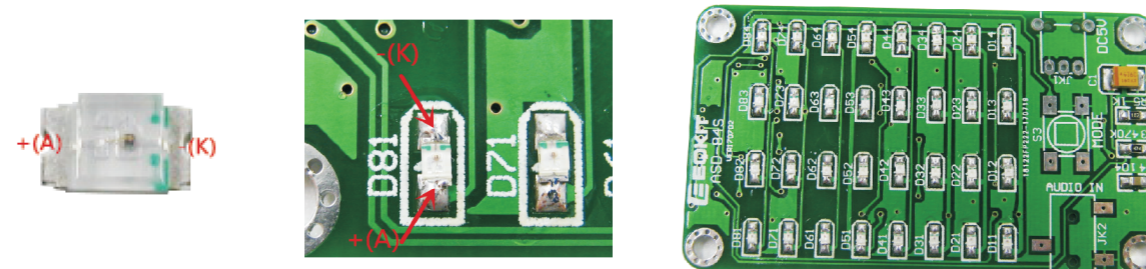


3. Install the 47UF capacitor to the C1 Notice that the positive and negative electrodes of the capacitor cannot be reversed

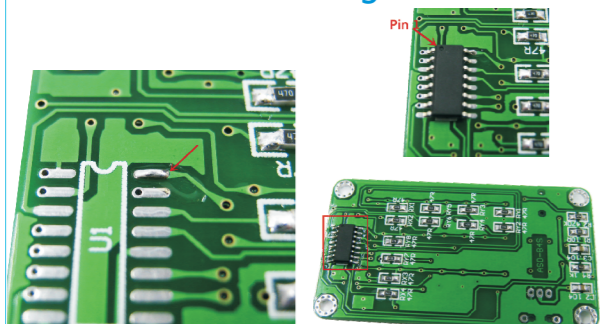


4. Install LED: The emitting surface is upward, and the negative electrode is printed with green.

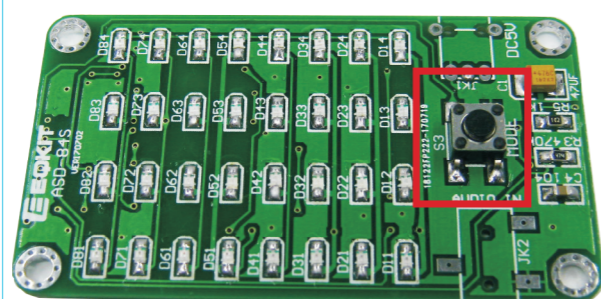
RedLED to D11.D21.D31.D41.D51.D61.D71.D81
Green LED to D12.D22.D32.D42.D52.D62.D72.D82
Blue LED to D13.D23.D33.D43.D53.D63.D73.D83
Yellow LED to D14.D24.D34.D44.D54.D64.D74.D84



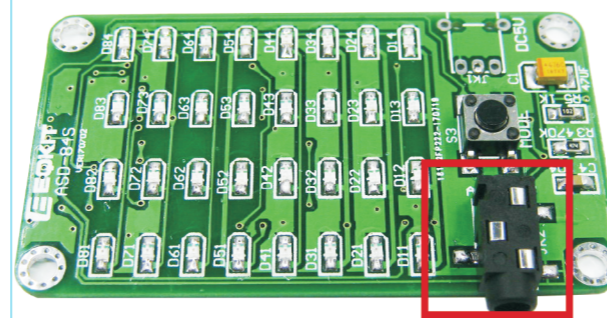
5. Install IC : Solder the integrated circuit to the U1. Pay attention to the direction of the integrated circuit



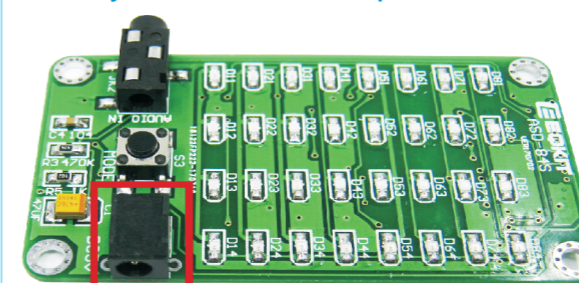
6. Install Contact switch to S3



7. Install Audio input socket to JK2



8. Install Power input socket to JK1 And Check the polarity of LED Electrolytic capacitor Integrated circuit. Finally switch on the power

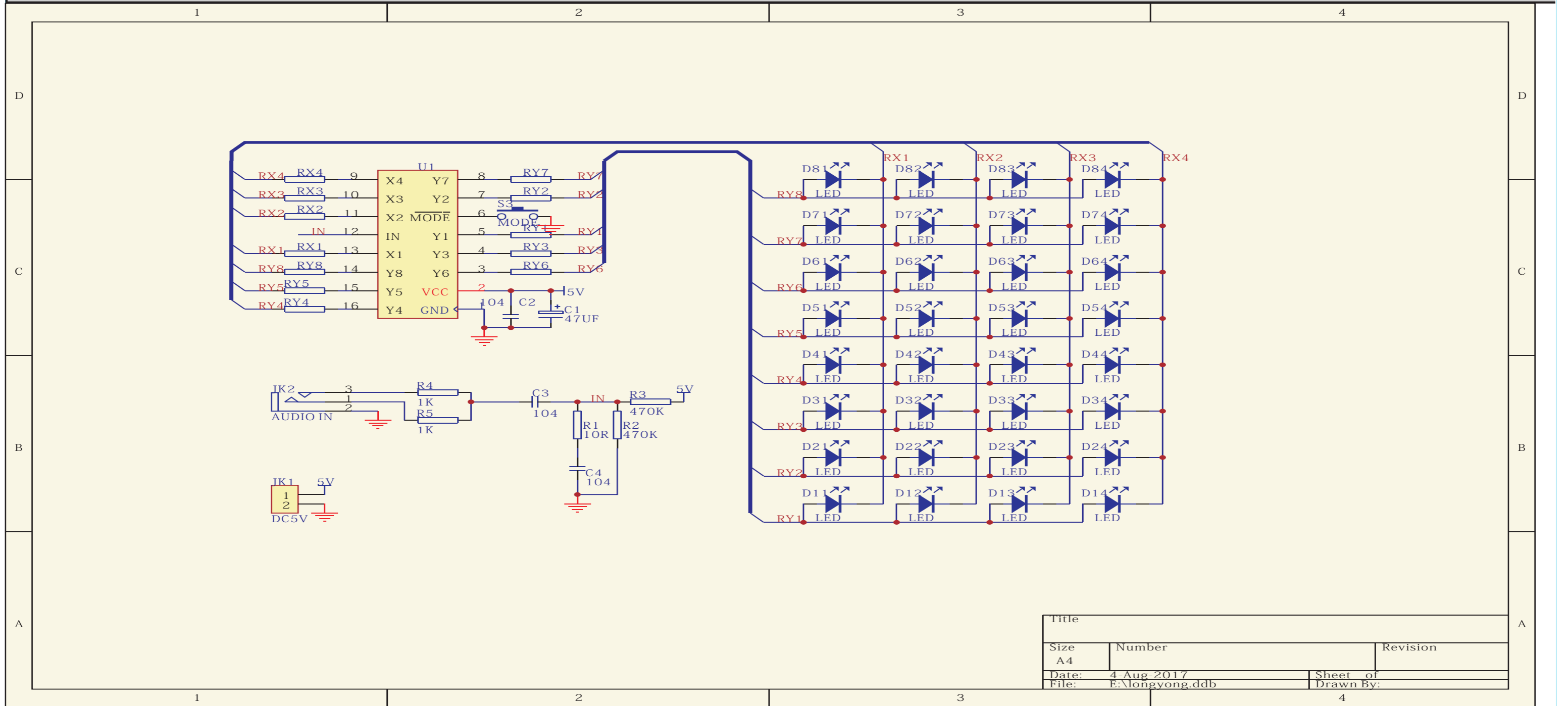


ASD-84S SMD Audio spectrum component list

NO.	Name	Mode	QTY
R1	SMD RES	10R(0805)	1+2
RX1-RX4. RY1-RY8	SMD RES	47R(0805)	12+2
R4. R5	SMD RES	1K(0805)	2+2
R2. R3	SMD RES	470K(0805)	2+2
C2. C3. C4	SMD CAP	104P(0805)	3+2
C1	SMD E. CAP	47uF	1
S3	Contact switch	SMD6*6*5	1
U1	IC	1084S	1
JK2	Audio input socket	SMD3P	1
JK1	Power input socket	3.5mm	1
D11-D81	LED	Red0805	8+2
D12-D82	LED	Green0805	8+2
D13-D83	LED	Blue0805	8+2
D14-D84	LED	Yellow0805	8+2
—	PCB	ASD-84S	1
JK1	USB to DC Line	3.5mm0.8M	1
Free give	Audio input line	3.5mm1.2M	1
Free give	One in two audio socket	black	1

Working model	Working model	Display	Function description	Default declaration
Short press	Quick refresh speed	3	Refresh speed is very quick, very dynamic	2
	Medium refresh rate	2	Refresh speed is average	
	Slow refresh rate	1	The refresh speed is slow and the vision is good	
Long press	High sensitivity	H	Capable of detecting weaker signals	B
	Medium sensitivity	B	Able to adapt to most signals	
	Low sensitivity	L	Capable of filtering weaker interfering signals	

Press and hold the button first, then switch on the power, Get into Factory mode



Title		
Size A4	Number	Revision
Date: 4-Aug-2017	Sheet of	Drawn By:
File: E:\longyong.ddb		